



XPLORER 1

MARINE SURVEY USV

UNCREWED SURFACE VESSEL



Oil & Gas



Wind Farm



Near Shore



Off Shore

Sea State IV
ENVIRONMENT

≥ 500 KG
PAYLOAD

≥ 500 NM
ENDURANCE

3° in SS3
ROLL AMPLITUDE

XPLOER 1

TECHNICAL SPECIFICATIONS

PHYSICAL

Dimension	8.38m(L)*2.517m(W)
Hull Material	Anti-corrosion Marine Aluminum Alloy
Displacement	4.9t
Draught	0.65m
Payload	500kg

PROPULSION

Propulsion	Water Jet
Fuel	Diesel
Engine Capacity	916L
Power Rating	48kW@2700rpm

PLATFORM

Features	Modular Design + Excellent Navigability
Security	Anti-impact and Anti-overturn Active Roll Reduction System
Stability	Roll Amplitude : ≤ 3 Degrees in SS3
Thermostat	Device Cabin Kept at $28^{\circ}\text{C} \pm 2^{\circ}\text{C}$

PERFORMANCE

Survey Speed	5-8 kn
Max Speed	10 kn
Endurance	500nmile@6kn
Survival	Sea State IV
Operation	Sea State III

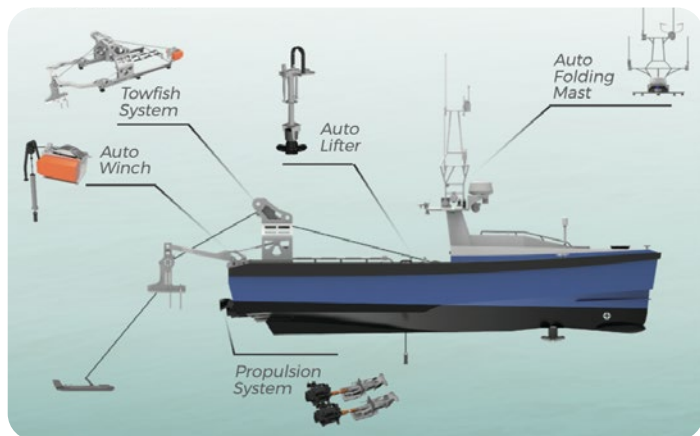
PERFORMANCE

Control Mode	Manual + Remote Control + Autonomous
Range	Auto: $\geq 10\text{KM}$ RC: $\geq 800\text{m}$
Base Station	3 \times Independent Display Screens (Real-time Video/ Navigation/ Survey)


NAVIGATION AIDS & SAFETY

- ✓ AUTO Collision Avoidance
- ✓ Multi-USV Cooperative Control
- ✓ Fault Self Inspection
- ✓ Auto Return During Communication Loss
- ✓ Route Deviation: $\leq 2\text{m(RMS)}$ in SS3


FEATURES



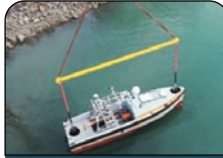
Multiple Automatic Launch & Recovery Methods



Two-point(Two-hook)
Lifting Style



Lifting Basket
Style



Two-point(One-hook)
Lifting Style

