



# XPLORER 1

## MARINE SURVEY USV

UNCREWED SURFACE VESSEL



Oil & Gas



Wind Farm



Near Shore



Off Shore

**Sea State IV**  
ENVIRONMENT

**≥ 500 KG**  
PAYLOAD

**≥ 500 NM**  
ENDURANCE

**3° in SS3**  
ROLL AMPLITUDE

# XPLORER 1

## TECHNICAL SPECIFICATIONS

### PHYSICAL

<b>Dimension</b>	8.38m(L)*2.517m(W)
<b>Hull Material</b>	Anti-corrosion Marine Aluminum Alloy
<b>Displacement</b>	4.9t
<b>Draught</b>	0.65m
<b>Payload</b>	500kg

### PROPULSION

<b>Propulsion</b>	Water Jet
<b>Fuel</b>	Diesel
<b>Engine Capacity</b>	916L
<b>Power Rating</b>	48kW@2700rpm

### PLATFORM

<b>Features</b>	Modular Design + Excellent Navigability
<b>Security</b>	Anti-impact and Anti-overturn Active Roll Reduction System
<b>Stability</b>	Roll Amplitude : $\leq 3$ Degrees in SS3
<b>Thermostat</b>	Device Cabin Kept at $28^{\circ}\text{C} \pm 2^{\circ}\text{C}$

### PERFORMANCE

<b>Survey Speed</b>	5-8 kn
<b>Max Speed</b>	10 kn
<b>Endurance</b>	500nmile@6kn
<b>Survival</b>	Sea State IV
<b>Operation</b>	Sea State III

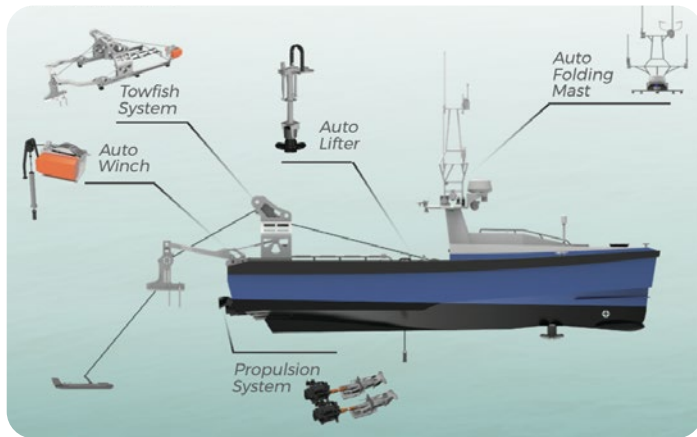
### PERFORMANCE

<b>Control Mode</b>	Manual + Remote Control + Autonomous
<b>Range</b>	Auto: $\geq 10\text{KM}$ RC: $\geq 800\text{m}$
<b>Base Station</b>	3 x Independent Display Screens (Real-time Video/ Navigation/ Survey)

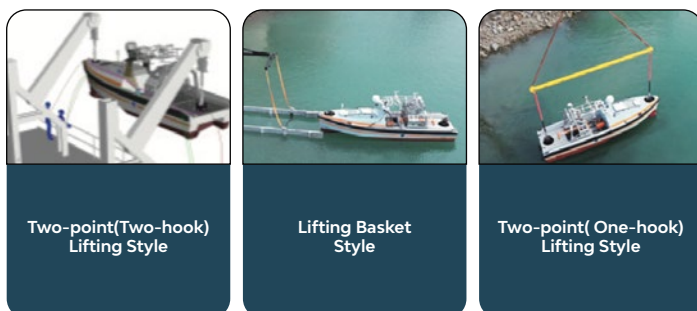
### NAVIGATION AIDS & SAFETY

- ✓ AUTO Collision Avoidance
- ✓ Multi-USV Cooperative Control
- ✓ Fault Self Inspection
- ✓ Auto Return During Communication Loss
- ✓ Route Deviation:  $\leq 2\text{m(RMS)}$  in SS3

## FEATURES



### Multiple Automatic Launch & Recovery Methods



## TYPICAL PAYLOADS

